

# **The Dryblower**

August 2025



*Cue's only dedicated news resource on what's  
happening in and around Cue.*



---

# The Dryblower

---

## A not for profit community newsletter

produced and distributed by the Cue Community Resource Centre. All editions are available in hard copy through listed distribution outlets and electronically on the Shire of Cue and Cue CRC websites.

---

### DISTRIBUTION OUTLETS

Cue CRC  
Shire of Cue  
Tourist Park  
Bell & Co  
Cue Roadhouse  
Queen of the Murchison

### ADVERTISEMENT COSTS

	B & W	Colour
Full Page	\$30.00	\$60.00
1/2 Page	\$15.00	\$30.00
1/4 Page	\$10.00	\$20.00

---

### DISCLAIMER

The information and personal views in this publication do not necessarily reflect the views of the Cue CRC or its employees. No liability shall be incurred for any omissions or errors in published articles or contributions.

This publication is produced and published by the Cue CRC and any complaints should be directed to the CRC management.

---



### CONTACT DETAILS

Cue CRC  
72 Austin St, Cue WA 6640  
PH: 08 9963 1198  
E: [info@cuecrc.net.au](mailto:info@cuecrc.net.au)

---

---

# The Dryblower

---

Unable to collect your copy of The Dryblower?

Fill in the form below and send it with your remittance.  
Or phone or email the Cue CRC and we can organise  
an invoice sent to you.

---

Name: \_\_\_\_\_

Address: \_\_\_\_\_

\_\_\_\_\_

Subscription: \_\_\_\_\_ (\$28.80 yearly for post only)

---

## CONTACT DETAILS

Cue CRC  
72 Austin St, Cue WA 6640  
PH: 08 9963 1198  
E: [info@cuecrc.net.au](mailto:info@cuecrc.net.au)



**Community Resource Centre**

*your local connection*

# Cue CRC Report

Hello Cue,

We've had over 800 visitors into the CRC in July, similar numbers to last year, school holidays were especially busy with families coming

In July we had our weekly Craft Group every Wednesday, our craft ladies come in and do some craft, but I think they chat more than craft—it's a great way to get together and enjoy some company of like minded people. Department of Transport visited and were certainly quite busy on the day. Markets were held on Saturday the 19th July, it seems to be working well with markets on Saturdays, so this is something we will continue throughout the year. And Services Australia visited on the 30th of July.

In August we have more of the same with Markets on Saturday 23rd, weekly craft group on Wednesday's. Games night on the 21st, run by Patrick, please go easy on him as this is his first event.

We are looking for volunteers both for the committee and some who would be interested in volunteering in the Cue Heritage Centre. If you are interested in either becoming a committee member or a volunteer for the CHC please come and see me at the CRC.

*Julie Humphreys*  
Manager







Cue  
Community Resource Centre  
*Your local connection*

# Cue Community Craft Group



Wednesdays  
9am  
Morning tea  
provided

At 72 Austin Street  
For more information

contact us on:  
9963 1198 or  
[info@cuecrc.net.au](mailto:info@cuecrc.net.au)

*Proudly supported by*



Department of  
Primary Industries and  
Regional Development







Cue  
Community Resource Centre  
*your local connection*

# Cue Community Market Day

Saturday 23rd August,

9:30am to 11:30am

72 Austin Street

**STALL HOLDERS WANTED!**

To book a stall or for more information contact the CRC on  
(08) 9963 1198 or [info@cuecrc.net.au](mailto:info@cuecrc.net.au)

Pancakes and a  
cuppa only \$5



*Proudly sponsored by*



GOVERNMENT OF  
WESTERN AUSTRALIA

Department of  
Primary Industries and  
Regional Development



**QUEEN**  
OF THE MURCHISON  
GUEST HOUSE & CAFE



53 Austin Street, Cue

*Cafe*  
**NOW OPEN**

Tuesday to Sunday  
8:00 AM – 4:00 PM

**COMING SOON**

Fresh fruit & vegetables, dairy,  
meat, milk, bread and more

Ph: 08 9963 1625

We thank you for your initial support of  
the cafe and look forward to providing an  
expanded range of necessary food  
products for your daily use.

# From the CEO

Have you seen The Western Australian Bank at night? The Shire has installed new lighting to the outside of the building. It showcases yet another one of our restored historic buildings. You can come and see this building and several other historic buildings at regular times, giving you the opportunity to see inside these iconic places. The Railway building (Wittenoom St), Bank building (Austin St) and Masonic Lodge building (cnr Robinson St and Dowley St) are now open at regular times for public viewing. Check out the Shire notice boards or visitors centre for opening times.

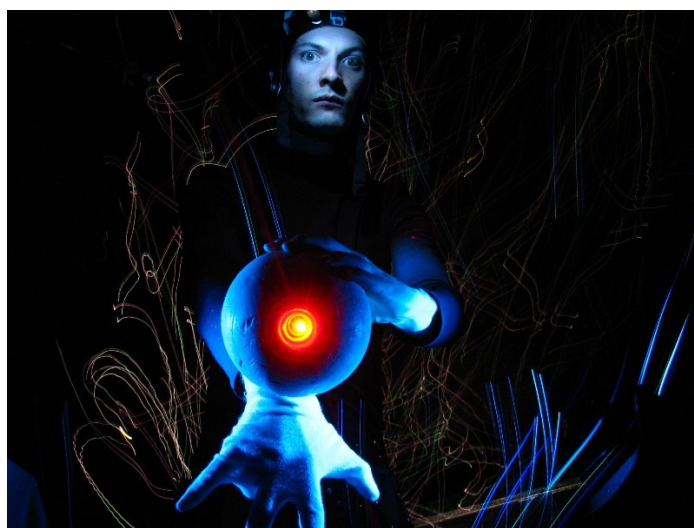


In the last week of June, four Councillors, a staff member and myself from the Shire of Cue and other representatives from Murchison Shires, flew over to Canberra to represent at the Australian Local Government Association convention. It was a non-stop week of activity. The week started with the Regional Cooperation and Development Forum which addressed disaster resilience, safer regional roads, mental health in regional communities and the State of the Regions by Bernard Salt AM. The main conference was over two days, the week finishing with the Ministerial engagement forum. Numerous presenters spoke on the theme of National priorities need local solutions. Her Excellency the Honourable Ms Sam Mostyn AC, Governor General of the Commonwealth of Australia provided a welcome and address along with Federal Minister the Hon Kristy McBain who spoke on several topics and occasions. This year we had around 1300 delegates from all around Australia attend, with around 190 motions debated, all focussed on advocating for more funding support for local councils, more funding for roads, housing, infrastructure, our environment, and lots more. Speakers at the conference covered topics including how AI is shaping our future and how this might look, local government jobs and skills, housing and community infrastructure, safer roads, emergency management and leadership in an ever changing climate.



On Wednesday 16 July 2025 a memorial for Cr Leonie Fitzpatrick was held at the Queen of the Murchison where those in attendance were able to say their final goodbyes to Leonie. Joyce provided a wonderful and plentiful morning tea, and everyone reminisced and shared stories about Leonie.

On Monday 14 July 2025 we hosted an inspiring and thought provoking CircuitWest Shows on the Go production of The Adventures of Alvin Sputnik: Deep Sea Explorer. This show has been touring the world since 2009 and was presented as a one-man combination of puppetry, animation and poignant storytelling to deliver a visually breathtaking and at times emotional experience. The Cue audience enjoyed the night and feedback was amazing. A big thank you to the Shire staff for providing food prior to the show.



Shire President Les Price and I attended the Murchison Mining Business meeting held in Meekatharra on Friday 25 July 2025. This collaboration was facilitated by the Mid West Development Commission and supported by the Shire of Meekatharra and Meekatharra CRC. This was an opportunity to meet mining industry representatives and mining equipment, technology and services suppliers in the region. Also in attendance were Mid West Development Commission Board and senior staff members.

The Carey Right Track Foundation are attending Cue on a fortnightly basis to provide programs at the Cue Primary School and after-school activities at the Youth Centre. This initiative is a collaboration between Westgold Resources, Cue Primary School and the Shire of Cue. It has been agreed by all parties to keep this program going for the remainder of the year with Westgold providing flights, meals and accommodation and Cue Primary School and the Shire of Cue sharing the cost of delivering the program.

We are pleased that Joyce, owner of the Queen of the Murchison Guest House and Café, has reopened the Café. The opening hours will be Tuesday to Sunday from 8:00am to 4:00pm. The Shire Administration staff can vouch for the delicious cakes, slices and coffee available.



For anyone interested in nominating for the upcoming Local Government elections, WALGA is holding a “Candidate Information Briefing Webinar” – 6pm Monday 18 August 2025. For further information, when details become available, refer to the Shire’s website and Facebook page.

A reminder to everyone travelling on roads in the Shire of Cue. There are a number of roadworks taking place both on Great Northern Highway and on our local roads. Please drive to conditions, slow down and observe any traffic management directions. For up-to-date road conditions, please check our website for the latest information [www.cue.wa.gov.au/roadreport/](http://www.cue.wa.gov.au/roadreport/).

Dog owners are reminded of their obligations to keep their dogs contained within the boundaries of their property or on a leash while walking. Please be considerate of others as it can be quite confronting to be approached by an unknown dog while out walking. The Shire Ranger visits the area frequently and will take action against unrestrained dogs in public places. The only authorised area within the townsite where dogs are permitted to be exercised off-leash is the town oval. It is your responsibility to control and look after your pets.

Mosquito fogging will be carried out intermittently, when conditions are suitable. This is usually just before dusk but can also include early morning, to control their numbers.

Upcoming events:

- Monday 4 August - Aladdin and his Magic Smartwatch (Shire Hall)
- Sunday 10 August – ICRAR Night Sky (Cue Aerodrome)
- Saturday 18 October 2025 – Local Government Elections

**Richard Towell**  
**Chief Executive Officer, Shire of Cue**

**Next Ordinary Council meeting – 6.00pm Tuesday 19 August 2025**



# Local Government Elections 2025

## **Candidate Information Briefing Webinar 6pm Monday 18 August**

WALGA, together with the Department of Local Government, Industry Regulation and Safety (LGIRS) and the WA Electoral Commission, will be hosting an Election Candidate Information Briefing webinar on Monday 18 August commencing at 6.00pm.

Presenters will cover a range of topics, with the aim of preparing successful candidates for life as an Elected Member.

Local Governments are encouraged to promote the opportunity for community members to tune in to the webinar and may wish to host a group viewing of the webinar at a Local Government venue.

Please register by following the link or scanning the QR code below.

<https://walga.asn.au/media-and-resources/latest-news/2025-local-government-elections-candidate-information-webinar>



Cue Local Election 2025

# Enrol to Vote

<https://www.elections.wa.gov.au/enrol>

## Who can vote

### Residents

All residents in the Cue district

### Owners and Occupiers

People who own or occupy rateable property within the Cue district, can **apply to the Shire of Cue** to be included on the roll as an owner/occupier, as long as they are eligible electors.

# Enrolments close 22.08.25





# CALL FOR NOMINATIONS

Local Government Election 2025



**Nominations Open Between**  
**28.08.2025**  
**-**  
**04.09.2025**

Contact Stephanie for appointment information  
08 9963 8600

**For more information**  
[https://www.elections.wa.gov.au/candidates  
-and-parties/local-government-candidates](https://www.elections.wa.gov.au/candidates-and-parties/local-government-candidates)

**FREE**

# Aladdin AND HIS Magic Smartwatch

By A.J Bailey

A FAMILY FRIENDLY  
INTERACTIVE PERFORMANCE



**DATE: 4 August**

**VENUE: CUE SHIRE HALL**

**TIME: 6PM**

**Light supper Provided**

**For bookings please call the Shire 9963 8600**

**Children under 16 to be accompanied by an adult**



# Dinner under the Stars

SUNDAY 10<sup>TH</sup> AUGUST 2025 CUE AIRPORT 6PM - 10PM

Star Track's Astronomy guides will take you on a cosmic adventure using a laser pointer to point out constellations and look through telescopes to see the wonders of the cosmos. Light supper provided.

**FREE ADMISSION! TO RSVP CALL 08 9963 8600**  
**CHILDREN UNDER 18 MUST BE ACCOMPANIED BY AN ADULT**







EC14411  
L212001

**Access Electrical Contracting**

# **ELECTRICAL & AIR CONDITIONING**

**PH: 0447 170 122**

SERVICING MIDWEST — BASED IN CUE

[admin@accesssec.com.au](mailto:admin@accesssec.com.au)



PL9934 | GF6916 | BF7329

**LEISK**  
**PLUMBING & GAS**

RESIDENTIAL | COMMERCIAL | INDUSTRIAL | MINING

☎ 0416 307 843

✉ [admin@leiskplumbingwa.com.au](mailto:admin@leiskplumbingwa.com.au)

🌐 [www.leiskplumbingwa.com.au](http://www.leiskplumbingwa.com.au)





We can collect from Shops, Businesses and Houses  
We can connect freight from Perth on our other service  
Booking Enquiries 0458274428  
Or email [gtmoverswa@gmail.com](mailto:gtmoverswa@gmail.com)

# SHIRE OF CUE

## ROAD REPORT

Up to date road reports are on the  
Shire of Cue website, link below:

[cue.wa.gov.au/roadreport/](http://cue.wa.gov.au/roadreport/)

---

# Council News

---

Hi 'Dryblower' Readers,  
Welcome to the August 2025 edition of the Cue 'Dryblower'.

Local Government Elections in Western Australia will take place on Saturday 18 October 2025. August sees the beginning of the election process with nominations opening on 28<sup>th</sup> August and closing at 4.00pm on 4<sup>th</sup> September.

Although we are 3 months away from the election this is the time for eligible voters to consider nominating to take on the role of a Councillor for the Shire of Cue. This election we will have 4 council positions being contested. Being on council can be a rewarding duty and your valuable contribution would be most welcome. We have been fortunate to have had a stable council over the last 10 years and coupled with a good administration our town has benefited from that stability.

Keep your eye open for the usual public notices that will be on the public notice board at the Shire Office. If you require any information on the October 2025 elections please see the link below:-

<https://www.elections.wa.gov.au/2025-local-government-elections>

In the meantime, the business of Local Government continues.

On 2<sup>nd</sup> July Western Australian Local Government Association ('WALGA') State Council met for the State Council Meeting and Strategic Forum. The meeting focused on 3 main issues:-

1. Updating the **Development Assessment Panels** advocacy position to ensure that there was consistency and accountability; that panels were accessible to local communities with objective planning decisions based on professional planning reports.
2. State Council endorsed the **State and Local Level Agreement** for the provision of Public Library Services in Western Australia.
3. State Council endorsed the findings of the 2024-2025 **Annual Performance Review Report** and CEO **Performance Criteria** for the 2025-2026 year.

At the Strategic Forum State Councillors received an important presentation from St. John Ambulance which centred on the Community First Responder Network. To emphasise the importance of the First Responders the presenter brought along a recipient who provided the meeting with his life changing experience. Early recognition, early CPR, early defibrillation and early advanced care is the critical pathway to survival of sudden cardiac arrest.



The Forum received a ***Renewable Energy Update*** with a focus on Community Benefits. State Councillors have been urging WALGA to advocate on behalf of Local Government to ensure the benefits of renewable energy projects are passed on to their communities. In addition, proponents of a renewable project need to engage with Local Government more broadly in the planning phase of the project and not wait until the project was underway.

The 2025-2026 Budget was reviewed and approved at the State Council Meeting.

Also, on 2<sup>nd</sup> July I had a briefing session with WALGA Executive Manager, Policy Nicole Mathews on matters that the Environment Policy Team have been dealing with which include:-

1. Climate Change Advocacy Position. WALGA will be sending a recommended position for Zones to consider prior to being referred back to State Council for discussion and approval.
2. An update on the H5 Bird Flu which is not yet in Australia but is expected to be detected at some point in time.
3. Native Vegetation Permit advocacy is around time frames and seeking a more practical way for Local Governments to operate and clear land for that purpose.

On 8<sup>th</sup> July Council held its monthly forum. The forum received a report from the CEO, Mr. Richard Towell on the activities of the Shire including an update on the progress of the bank building, which is nearing completion. The forum also received financial reports on the activities of the caravan park and the airport. The caravan park has been very busy with full occupancy at different times during the current tourist season.

Works Supervisor, Mr. John Curtin updated the forum on the activities of the outside crew.

The Metropolitan Waste Advisory Council ('MWAC') held its meeting on 9<sup>th</sup> July. The Polyphagous Shothole Borer has become a Statewide and National issue with the destruction of in excess of 3,000 trees in the metropolitan area. Other topics included:-

1. Household Hazardous Waste.
2. Battery disposal.
3. Emergency Waste Management.
4. Better waste management at public events.
5. Container Deposit Scheme with a potential widening of the products which can be included in the recycling scheme.

On 9<sup>th</sup> July, the Department of Primary Industries and Regional Development ('DPIRD') held a Polyphagous Shot-Hole Borer Information Session for Local Governments. This presentation outlined the way in which the State will have to manage the infestation.

The Shire Council held its monthly meeting on 15<sup>th</sup> July where Council approved the purchase of a new prime mover, side tippers and dolly. Details of the meeting can be found on the Shire's website.

<https://www.cue.wa.gov.au/council-meetings/ordinary-council-meeting/ordinary-council-meeting/132>

As a precursor to the Council Meeting, Council held its Audit Committee Meeting. There were very few audit issues that were of concern. The Shires finances are in a very healthy state, and we hope this trend continues.

On 24<sup>th</sup> July I attended a Mining Workshop in Meekatharra with CEO Mr. Richard Towell. The workshop was organised by the Midwest Development Commission. With around 45 people in attendance many local and regional businesses came along to promote their goods and services. The workshop was a great success.

Meekatharra CEO Mr. Nathan Cain gave Richard and I a guided tour of the town and discussed his plans for Meekatharra and the various projects in the pipeline.

I attended an Election Candidate Briefing workshop in Mt. Magnet which presented by Mr. Tony Brown from WALGA. Tony presented on all of the roles and responsibilities of a Councillor including all of the rules and statutory compliance obligations of becoming a Councillor. The presentation was to inform those at the meeting who were considering nominating for council.



I also attended a meeting of the Presidents in Mt. Magnet where we discussed the various activities within each Shire. This meeting was an initiative designed to co-incide with the Murchison Executive Meeting ('MEG') for CEOs and gives presidents the opportunity to discuss issues and concerns and look at how our councils can better serve our communities.





Finally, it was a nice gesture by Joyce from the Queen of the Murchison on 16<sup>th</sup> July to put on a morning tea in memory of former Councillor Leonie Fitzpatrick who passed away not so long ago. Leonie was a long time Councillor with our Shire.

Readers, please feel free to contact myself or any of the other Councillors if you have a matter you need to bring to the attention of Council and the Administration. Council is always looking to the community to provide input into the future direction of our town.

Keep safe and....until the next edition of the Dryblower, it's goodbye for now!



Shire President  
Les Price



# Murchison Settlement

MEET OUTBACK MIKE  
As seen on ALONE Australia Season 1

1 - 2 August 2025

Get ready to gather 'round the campfire, cook up some delicious dishes, and enjoy a weekend of fun at the Murchison Camp Oven Muster!



2 DAYS - 19 EXPERIENCES - 1 TICKET

Secure yours at  
[murchison.wa.gov.au](http://murchison.wa.gov.au)

# MOVEMBER



SUPPORT MEN'S HEALTH  
GET READY & SHAVE!



Desert Fire Designs is a jewellery and giftware brand based in Perth WA, renowned for its exceptional craftsmanship and unique collection of Western Australian gems and minerals.

The owner Murray Thompson— has a rich background in gem-cutting and prospecting, and geology complemented by qualifications in lapidary and gemmology.

Through the expert craftsmanship of Murray at Desert Fire Designs, locally sourced material is transformed into stunning collector's sets, cabochons and heirloom jewellery — each piece a celebration of WA's geological marvels.



No two are ever alike underscoring the brand's heritage and commitment to artisanal craftsmanship.

- Rare West Australian gemstones
- Each piece is unique!
- Handcrafted
- Not mass produced. Limited edition suites when gem material is available.

### **Gold veined quartz**

My attraction to specimen gold started after spending some time prospecting in the Murchison Goldfields (Cue and Nannine in particular) during 1978-80. Specimens were reasonably common then...but they were not kept for long, usually dollied up...most still are.

These days it is very difficult to find or even see a 'specie'. So, I've had to look elsewhere.



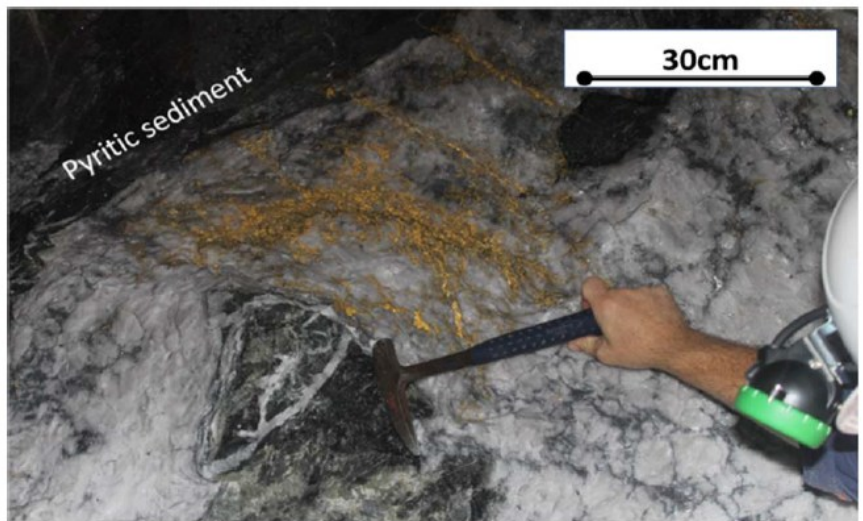


## The Beta Hunt nickel/gold mine on Lake Lefroy at Kambalda.

Gold was recovered from deep underground at the Beta Hunt nickel mine by Western Mining Company during their work there in the 1970's, those finds were kept quiet at the time. That all changed in September 2018.

On Father's Day day-shift workers clearing an overnight blast came across what has become the largest single find of gold bearing ore in recent Western Australian mining lore, The Father's Day find worth at the time \$63 million. (778 kgs of Au).

Desert Fire Designs was fortunate to be in a position to purchase material from that historic find.



*Father's Day vein – 15L, A Zone. Note the association with the pyrite rich dark coloured, metamorphosed sediment. Source Karora (2019)*

---



*An 8 kg gold specimen of the Father's Day find after initial sawing in the workshop of Desert Fire Designs.*

---

## Working gold veined quartz or specimen gold.

Every gem is expertly cut from hand-selected, stabilised rough, revealing natural gold running through quartz and black metasediment.

After slabbing to 2.8 mm thickness with a diamond wire saw in the workshop, the full beauty within is revealed, and it just breathtaking.

The beauty of 92% pure gold intergrown with a white quartz is stunning, leading to multiple avenues in jewellery design. Some specimens also contain other minerals such as chlorite, calcite, pyrite and altered basalt.

The material from the now legendary Beta Hunt Mine, at Kambalda, is some of the best that's available today. In fact, it really is world-class!



*Slabbed gold veined quartz from the Father's Day find, Beta Hunt mine.*

Through all the stages of cutting and polishing one thing is most important and that is the finished product is sound and appropriate for jewellery wear and as a keepsake for generations to come.

I would like to invite you to come and see the full collection in person at our gem, mineral and fine jewellery boutique at the:

Cue Community Resource Centre  
72 Austin Street, Cue WA  
Monday 25th August from 10am-4pm

In the meantime please visit our website at:  
[desertfiredesigns.com](http://desertfiredesigns.com)



*Sawing out preforms marked out on the diamond wire sawn, 2.8 mm thick slabs of gold veined quartz.*





# DF DESERT FIRE

## WE SOURCE:

Unique mineral and gem specimens from Australia's desert lands.

## WE SHAPE:

And apply other techniques to meticulously beautify your specially designed piece.

## WE SHINE:

Tailored to create items of integrity and beauty.

---

**GEOLOGY | LAPIDARY | COLLECTABLES**

---

**MURRAY THOMPSON - 0425 884 817**  
[contact@desertfiredesigns.com](mailto:contact@desertfiredesigns.com)

**DESERTFIREDESIGNS.COM**



# CUE AMBULANCE VOLUNTEERS NEEDED!



## VOLUNTEER BENEFITS

- Access to free and discounted first aid training and equipment
- Free ambulance officer training
- Free ambulance cover
- New skill development

## Join Now



## WE NEED HELP WITH:

- Driving an emergency ambulance
- Looking after people who call an ambulance
- Transporting patients to RFDS or Meekatharra
- Checking ambulance stock

## For more information:

Call us at 0437 681 562  
or send us an email at  
[cp.midwesteast@stjohnwa.com.au](mailto:cp.midwesteast@stjohnwa.com.au)

# NURSING POST

**August 2025**

**RFDS:**

*Tuesday 5th*

*Tuesday 19th*

Dates were correct at time of print.  
Please contact the Nursing Post to  
confirm dates (08) 9963 0100.



# EMERGENCY SERVICES

*Fire & Rescue, Ambulance & Police*

*In case of emergency please call*

# 000

# LOGIC PUZZLE

		names					scientists					locations				
		Bill	Dale	Harry	Izzy	Kevin	Architect	Diplomat	Engineer	Lawyer	Musician	Belguim	France	Mexico	South Africa	Sweden
years	April 13th															
	May 18th															
	June 14th															
	July 16th															
	August 15th															
locations	Belguim															
	France															
	Mexico															
	South Africa															
	Sweden															
scientists	Architect															
	Diplomat															
	Engineer															
	Lawyer															
	Musician															

## CLUES

1. The person from Belgium has a birthday one month after the Musician.
2. Dale is not the Lawyer.
3. Neither the Architect nor Dale is the person from Mexico.
4. The person from Mexico has a birthday 3 months after the Musician.
5. The person from Sweden is the Musician.
6. Harry was born on July 16<sup>th</sup> and is the Engineer.
7. Kevin has a birthday sometime after the Architect.
8. Izzy is not from Mexico and was not born on April 13<sup>th</sup>.
9. The Lawyer has a birthday 2 months after the person from France.
10. The person from Mexico is born on either August 15<sup>th</sup> or April 13<sup>th</sup>.



# SUDOKU

1.

5	1							
			1	7			2	9
		2		5				8
		9				6	1	
4	5	1				8		
					7			5
	2				8	4		1
7		3	6					

2.

4	5			7		2		6
6			1		5		9	
			8			1		
					4		6	
8	3		5				4	
							1	7
		5		9	3			
1			7		8	6		
	7			2				



Quality Seafood delivered to your door

## Ordering is easy!

Email - coral@westcoastseafood.com.au

Phone - Coral - 0407 424 435

Shop online - westcoastseafood.com.au

Prices effective from June 2023



### FISH FILLETS-CUTLETS-WHOLE FISH

Smoked Cod (South Africa)	1kg	\$24.00
Royal Bassa (Pacific Dory) (China)	1kg	\$25.00
Southern Ocean Hake (Australia & NZ)	1kg	\$26.00
Whiting Southern (New Zealand)	1kg	\$26.00
Sweetlip Hoki (New Zealand)	1kg	\$26.00
Flathead Fillets - (Queensland)	1kg	\$31.00
Red Spot Emperor - (Thailand)	1kg	\$36.00
Mackeral Cutlets (West Australian)	1kg	\$38.00
Atlantic Cod (Norwegian)	1kg	\$41.00
Pearl Perch (Queensland)	1kg	\$44.00
Grouper	1kg	\$41.00
Gold Band Snapper (Onslow WA)	1kg	\$47.00
Tuna Steaks (South Australian)	1kg	\$47.00
Barramundi Portions (Kimberley Aust)	1kg	\$51.00
Salmon Portions - UNGRADED (Norway)	1kg	\$51.00
Barramundi Fillets	1kg	\$36.00
Red Emperor (Onslow WA)	1kg	\$57.00
Salmon Portions - Premium (Norway)	1kg	\$57.00

### HEAT & EAT MEALS & SNACKS

Family Pies (Beef, Chicken & Leek)	850g	\$20.00
Quiche - (Spinach & Feta)	900g	\$20.00
Pizza (Hawaiian, BBQ Chicken, Supreme)	ea	\$20.00
Chicken Breast Nuggets	1kg	\$25.00
Chicken Wings & Drums (Mild or spicy)	900g	\$25.00
Chicken Sweet Chilli Tenders	800g	\$25.00
Meat Balls (Aussie BBQ)	1kg	\$25.00
Chicken Meat Roasted	1kg	\$25.00
Mini Spring Rolls - Vegetable	900g	\$27.00
Gourmet Beef Burgers (New Zealand)	1kg	\$27.00

### LENARDS CHICKEN

Jumbo Chicken Burgers (8 on a tray)	1kg	\$27.00
Mignons (4 tray)	4pk	\$27.00
Enchiladas (4 tray)	1kg	\$29.00
Marinated Chicken Skewers (10 tray)	10pk	\$29.00
Garlic & Herb Schnitzel (4 tray)	1kg	\$31.00
Rolled Roast - Honey Mac or Cheese & Bacon	1kg	\$31.00
Chicken Kievs (Breast - 4 tray)	4pk	\$32.00

### PRAWNS

Marinated Prawn Meat (Garlic or Chilli) (Aust')	500g	\$28.00
Garlic Prawn Skewers (10 pk) (Thailand)	500gr	\$32.00
Cooked Exmouth Endeavours (West Aust)	1kg	\$33.00
Raw Northern King (West Aust)	1kg	\$33.00
Large Cooked King Prawns (West Aust)	1kg	\$51.00
XLarge Raw Prawn Meat (Aust & Thailand)	1kg	\$51.00
XLarge Cooked Prawn Meat (Thailand)	1kg	\$51.00
XL Raw King Prawns (West Aust)	1kg	\$51.00
Shark Bay Prawn Meat (West Aust)	1kg	\$67.00

### MISC SEAFOOD

Mussels Whole (New Zealand)	1kg	\$14.00
Chilli Squid Rings (New Zealand)	500g	\$20.00
NZ Littleneck Clams (New Zealand)	1kg	\$24.00
Raw Crab Meat (Shark Bay WA)	200g	\$24.00
Seafood Marinara (Thailand)	1kg	\$24.00
Squid Tubes (New Zealand)	1kg	\$28.00
Mussell Meat (New Zealand)	1kg	\$30.00
BBQ Combination Pack	1kg	\$31.00
(prawns, fish, squid, scallops, mussels, feeds 4)		
Oysters ½ shell (New Zealand - South Island)	1doz	\$31.00
Scallop Meat (Tasmanian)	500g	\$37.00
Moreton Bay Bug MEAT (Queensland)	500g	\$42.00
Crayfish - vary in size 450-600gr	aver	\$37.00ea
Kinna	170gm	\$35.00

### CRUMBED SEAFOOD

Fish Nuggets (New Zealand)	1kg	\$25.00
Crumbed Fish Fillets(10 fish) (New Zealand)	1kg	\$25.00
Crumbed Squid Rings (NZ & Thailand)	1kg	\$25.00
Fish & Chips (5 fish & 1kg chips)	1.5kg	\$27.00
Salt & Pepper Squid (NZ & Thailand)	1kg	\$30.00
Prawn Fritters (Aust & Thailand)	900gr	\$31.00
Salt & Pepper Prawns (Thailand)	500gr	\$31.00
Fantail Prawn Cutlet (Thailand)	1kg	\$41.00
Fisherman's Basket (Fish, Squid, Prawns)	1.4kg	\$41.00

### DESSERTS

Apple Pie - (Perfect Family Pie)	900gr	\$20.00
Blueberry & Apple Pie (Family Size)	900gr	\$20.00
Mixed Berry Crumble (Family Size)	900gr	\$20.00

EFTPOS Available

BSB 036 103 - ACC 606 798

EFTPOS Available

# COMMUNITY GAME NIGHT

**August 21st, 6pm  
72 Austin Street**

**BYO snacks and drinks**

**Feel free to bring a game**

**Children must be accompanied  
by an adult**

For more information contact the  
CRC  
[info@cuecrc.net.au](mailto:info@cuecrc.net.au) or (08) 9963 1198



Department of  
**Primary Industries and  
Regional Development**



# July Answers

## LOGIC PUZZLE

Time	Names	Appetisers	Cereals
2 min, 59 sec	Karen	Potato Skins	Cheerios
3 min, 2 sec	Jay	Chilli Fries	Bran Flakes
3 min, 8 sec	Clayton	Fried Pickles	Muselix
3 min, 14 sec	Colby	Fried Mozzarella	Apple Jacks
3 min, 19 sec	Taylor	Soup of the Day	Honeycomb

## SUDOKU PUZZLE

1.

5	1	4	3	9	6	2	7	8
3	6	2	8	1	7	4	5	9
9	8	7	5	4	2	3	1	6
6	3	5	7	2	4	9	8	1
2	9	1	6	5	8	7	3	4
4	7	8	1	3	9	6	2	5
1	4	3	9	7	5	8	6	2
7	2	6	4	8	1	5	9	3
8	5	9	2	6	3	1	4	7

2.

2	4	3	1	7	6	9	8	5
6	1	5	4	9	8	3	7	2
7	9	8	3	5	2	4	1	6
5	7	4	9	2	1	6	3	8
3	8	2	6	4	7	1	5	9
9	6	1	5	8	3	2	4	7
4	2	7	8	1	9	5	6	3
1	3	9	7	6	5	8	2	4
8	5	6	2	3	4	7	9	1

# August 2025

SUNDAY	MONDAY	TUESDAY	WEDNESDAY	THURSDAY	FRIDAY	SATURDAY
31					1	2
3	4 Aladdin	5 RFDS	6 Craft Group	7	8	9
10 Dinner Under the Stars	11	12	13 Craft Group	14	15	16
17	18	19 RFDS  Council Meeting	20 Craft Group	21 Games Night	22	23 Markets
24	25	26	27 Craft Group	28	29	30



Cue

Community Resource Centre

*your local connection*

# OPENING HOURS

Monday to Friday  
9:00am to 4:00pm

Saturday  
9:00am to 12:00pm

Sunday & Public Holidays  
CLOSED

PLEASE NOTE: Children must be accompanied by an adult  
for admittance.  
Pets not allowed.

*Proudly supported by:*



GOVERNMENT OF  
WESTERN AUSTRALIA

Department of  
**Primary Industries and  
Regional Development**