

THE

DRYBLOWER

JULY 2021





A not for profit community newsletter
produced and distributed by the Cue
CRC.

All editions are available
electronically via cue.crc.net.au or
cue.wa.gov.au.

DISTRIBUTION OUTLETS

Cue CRC
Shire of Cue
Queen of the Murchison B & B
Murchison Club Hotel
Cue Tourist Park
Cue Roadhouse

ADVERTISEMENT PRICES

SIZE	B & W	COLOUR
Full Page	\$30.00	\$60.00
Half Page	\$15.00	\$30.00
Quarter Page	\$10.00	\$15.00

DISCLAIMER

The information and personal views in this publication do not necessarily reflect the views of the Cue CRC or its employees. No liability shall be incurred for any omissions or errors in published articles or contributions. This publication is produced and distributed by the Cue CRC and any complaints should be directed to the Cue CRC

CONTACT DETAILS

Cue CRC
72 Austin Street
PO Box 83
Ph: 08 9963 1198
E: cue@crc.net.au

All contributions are due by the
25th for publication on the 1st.

Unable to collect your copy of The Dryblower?
Fill in the form below and send with your remittance.

NAME: _____

ADDRESS: _____

SUBSCRIPTION: _____ \$26.40 per year (this is for the cost of
postage only)

FROM THE CRC

Hi All,

WOW! It's the end of the financial year again, the first 6 months of 2021 certainly went very quickly.

As always we've been pretty busy here at the CRC, we have had in excess of 500 visitors visit the CRC this month and that only includes tourist that are either passing through or staying for a few days.

We've had several activities and events. As usual Craft Group is every Wednesday from 9.00am and Walking Group every Monday evening from 5.00pm, Department of Transport visited on Monday the 14th.

We had the Cue Heritage Discovery Centre Open Day on the 17th and we also did a Sunday Breakfast for the Youth Centre on the 13th, unfortunately we didn't have many kids attend.

The Tourist Park Sausage Sizzle was on Wednesday 23rd, we thank the Cue Roadhouse for the delicious coleslaw they donated. It was another great turn out.

On Saturday 19th, we hosted a Bingo Night at the Cue Shire Hall with the proceeds going to the Cue Volunteer Ambulance and we are happy to announce that we raised over \$600. We would also like to thank the volunteers for help setting up, selling raffle tickets and Bingo Cards, and we especially thank Kent from Mount Magnet Meats who donated two of the meat packs that we raffled off.

Our Sunday Markets held on the 27th of June was another great turn out, with lots of crafty stall, the volunteer firies doing a food stall again.

Over the next month we will have the usual activities and in August we've going to do another Twilight Markets.

SUNDAY MARKETS



FOR MORE INFORMATION OR TO BOOK A STALL
PLEASE CONTACT US AT

08 9963 1198 OR EMAIL
CUE@CRC.NET.AU

JULY 25TH 2021
FROM 9.30AM
@PRICE PARK

 Cue
Community
Resource
Centre
Your local connection

FROM THE CEO

Rob Madson has finished his time in Cue and has now moved back to Tasmania to be with his family. I am very pleased and humbled to be selected as his replacement and look forward to continuing to serve the Cue community in the role of Chief Executive Officer. I would like to thank Rob for his contribution to the Shire of Cue and the many projects and events that he has made happen over his time here.

The Shire of Cue is currently reviewing and updating its Strategic Community Plans and seeking input from the community to gain a wider view of the community's aspirations for the Shire. A community survey has been prepared and is available in the Dryblower or online to provide feedback and assist Council in guiding the future direction for the Shire. I encourage everyone that lives, works and plays in the Shire to participate in the survey. More details are available on the back pages of this publication.

There are a number of Shire roads undergoing works with the Shire's roads crew undertaking works on Wondinong Road and patching works on the Beringarra Road. Flood damage works are still being undertaken by contractors on a number of roads between Coordardy and Austin Downs. For your own safety and the safety of the workers, please obey all traffic control signs when passing through roadworks.


Axiis Contracting have undertaken works on the Shire's shared use pathway program. New pathways have been constructed on Dowley and Allen Streets to complete a loop and a short section on Austin Street to complete the pathway to Patterson Street. A new pathway has been added to Chesson Street with the driveways for the ambulance centre and nursing post being reshaped for a smoother transition from the road. The pathways are dual use for walking and cycling and bike racks have been added to the network. It is great to see that the pathways are being utilised with a noticeable increase in people out for a walk.

Billed as Australia's first major Wastelander event, Pox-Eclipse will be held in the Shire of Cue from 26 -29 August. The event will present an opportunity for participants to immerse themselves in a post-apocalyptic themed camping experience based on the Mad Max film series. Tickets for the event are selling well so if you want to be part of this inaugural event, get in quick to secure your tickets so you don't miss out. Further details can be found on the Pox-Eclipse website.

Sunday bowls is now well underway with a regular crowd getting together for the afternoon. Starting at 1pm on Sundays. There are plenty of sets of bowls available to use and everyone is welcome to join in.

The next ordinary Council meeting will be held at 6:30pm on Tuesday 20 July 2021.

Richard Towell
Chief Executive Officer, Shire of Cue



Big Sky

READERS & WRITERS FESTIVAL 2021

SHORT STORY PRIZE

Invitation to all Midwest Writers

Weave your creative magic and craft a short story using a theme of your choice.

Enter for your chance to win **\$500**, plus VIP access to Festival Events!

ENTRY IS FREE

Winner announced 30 September at the Big Sky Festival Launch.

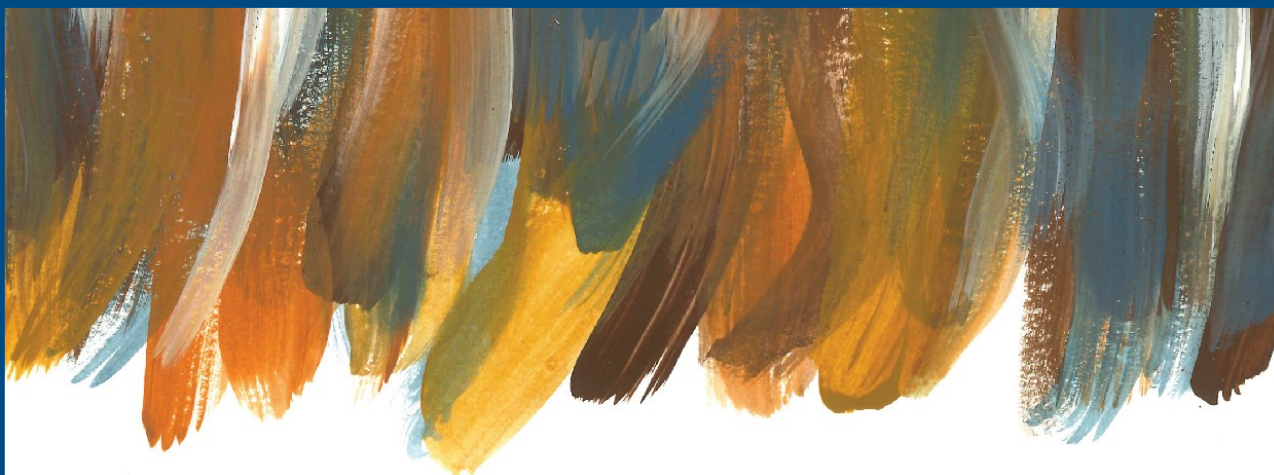
ENTRIES OPEN
19 April 2021

ENTRIES CLOSE
16 July 2021

WEAVE YOUR MAGIC

For more details on how to visit please visit
library.cgg.wa.gov.au/bigsky





MID WEST
ART PRIZE
2021

CALL FOR ENTRIES

Acquisitional Major Prize - \$20,000

ENTRIES CLOSE FRIDAY 10 SEPTEMBER 2021

To apply, visit <http://artgallery.cgg.wa.gov.au>



THE YOUTH CENTRE

The past month has been very steady with our young people regularly engaging in activities after school and on weekends. We spent as much time as possible outside enjoying the cool: swinging on the swing set (sometimes two at a time!), scooting at the skate park, having a picnic, experimenting with slimes and painting by the park.



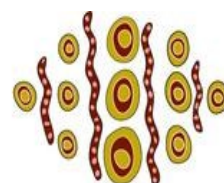
July will be an exciting month for our youth. Our school-aged youths will be enjoying a well-deserved two weeks off from school for the holidays. They will, of course, be engaged at the youth centre during the usual sessions over the two weeks (9AM – 1PM) at the Hall, except for below events.



First week of the holidays, from **3 July – 11 July**, our youths will be visited by a group of young volunteers from **StormCo** who will hold kids' holiday club for our youths at the Hall. They have visited Cue for youth outreach and community service for 19 consecutive years apart from last year due to the pandemic, and we are very excited to continue the tradition this year on.

The sessions will be: **9:00AM – 12PM & 2:00PM – 4PM**. The morning sessions will start with breakfast, followed by story time, singing, arts & crafts; afternoon sessions will consist of sports, face painting and community service projects. All youths are encouraged to attend.

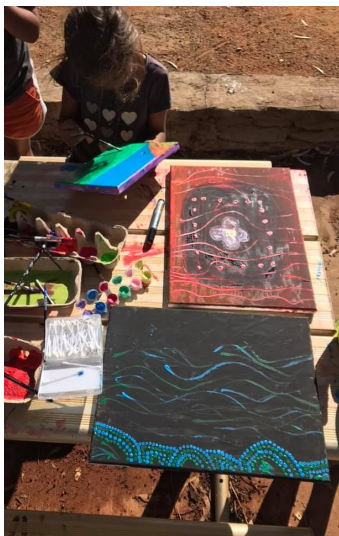
On the second week of the school holidays, we have a special program at the Wirnda Barna Art Centre in Mount Magnet on the **Tuesday 13 July** and the **Wednesday 14 July**. The art workshop will be from 10AM – 1:30PM in Mount Magnet. We will leave Cue on the Community Bus by **9AM**, and be back by **2:30PM**. The youths will learn art from local artists and hopefully these two days will inspire our youths to do more art.



WIRNDA BARNA



Perhaps most importantly, it is **NAIDOC week** from **4th to 11th of July**. This year's theme is Heal Country, and our youths will take the opportunity to reflect on their connections to Country, and how people can both heal from Country and to heal Country. Hope you can take time to let your younger members of the mob know how important Country is to you and to your family.



We would like to take this opportunity to invite all local artists to join us at the sessions to help our youths to create more art to help connect to their Country and instil pride in Aboriginal culture. If you could pop in during our session at the Hall on the **Saturday 17th of July**, anytime from **9AM – 1PM**, we would love to work with you to create beautiful art that we can hang by the new Centre when it is completed. Our youths already have so much talent to give – just need some inspiration and goal to work towards, as you can see from the photos!



Stay tuned for updates with events & photos by following us at Facebook Page @CueYouthCentre. Please feel free to reach out at the Shire Office, or at the Hall during our sessions, or via e-mail at youth@cue.wa.gov.au with questions or ideas.

Remember to enjoy a cuppa and connect with your friends.

That is all for now, and thank you for your support always.

Sydney & Caris

Cue Community Resource Centre

Craft Group

meets every Wednesday at the
Cue CRC from 9.00am

Bring your craft project, or create something
with craft products the CRC has on hand.

Morning tea supplied.

For more info:

☎ 08 9963 1198

✉ cue@crc.net.au

Put a spring in your step & join our

Walking Group with Pets

Let's get walking! Every Monday afternoon.

You can even bring your pets.

Please ensure pets are kept on a leash.



Happening on :
Every Monday from 5pm

Starting Point:
Cue Community Resource Centre

For more information
Call: 08 9963 1198

*Stop being idle.
Start you engine & get walking!*

MSOTA PLAYGROUP

Do you have a child or know a child who will be starting
Kindy in 2022 at Meekatharra School of the Air?



Play group will take place in Term 3 and 4- a
great opportunity to prepare children for School
of the Air.

For further information or to enrol, please contact Naomi
Haynes or Shona Nash on 99235200 or
naomi.johnston@education.wa.edu.au or
shona.nash@education.wa.edu.au

2021
MOUNT
MAGNET

ASTRO ROCKS FEST!

RACE DAY
SATURDAY 18TH

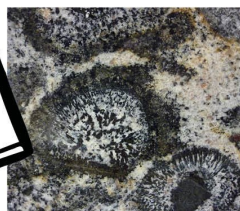
ASTRO FEST
FRIDAY 17TH SEPTEMBER

ROCKS FEST
SATURDAY 18TH SUNDAY 19TH



**CELEBRATING AWESOME NIGHT SKY
AND ANCIENT ROCKS
IN THE MURCHISON GEO REGION OF WESTERN AUSTRALIA**

A WEEKEND OF ASTRO & GEO ROCKS PRESENTATIONS, SCIART, CANVAS
AND QUILT EXHIBITIONS, MARKETS, FIELD TRIPS, TOURS, WORKSHOPS,
DEMONSTRATIONS, BLESSING OF THE ROADS CAR PARADE.



Astro Rocks Fest events are free entry and strictly no alcohol

www.astrorocks-mtmagnet.com.au • www.mtmagnet.wa.gov.au • [@astrorocks-mtmagnet](https://www.facebook.com/astrorocks-mtmagnet)

2019 Sponsors:



CUE PRIMARY SCHOOL

RESILIENCE: RESPECT: RESPONSIBILITY

Once again, we have had a busy term. Our wonderful volunteers have been coming into school regularly to read with our kids. One student even learnt to sew! Geraldton Regional Aboriginal Medical Service (GRAMS) nurse Ellissa came to school with Dr Carter. They checked our student's height, weight, ears etc before cooking us a steak and salad BBQ for lunch. All the students got a pack with reading books and shirts to take home.



At the start of June, Cue Primary acknowledges Harmony day with a BBQ at Brockman Park. This was a lovely event with so many of our families and friends attending.





Unfortunately, due to the latest Covid-19 restrictions, our overnight camp to Pia Wadjarri for NAIDOC week had to be cancelled. Teach, Learn, Grow (TLG) from UWA came to visit for the last week of term and did some engaging activities with our kids.



During the Holidays, Storm Co will be here again (Over 20 years) to do holiday activities and social service around town. Please say hello if you see them. Next term will see the introduction of an evidence based reading program called Initialit. We have already had a couple of days extra training and invested heavily to help our children read and succeed.

Don't Forget -

**** School starts back in Term 3 on Monday 19th July ****

CUE PRIMARY SCHOOL

RESILIENCE:RESPECT:RESPONSIBILITY

Staff Profile: Ellie Sanford

Connection to school: Teacher

Favourite Book: Oh the Places You'll Go - Dr Seuss

Who would play you in a movie about your life?

I am not a movie person really, so I am going off topic here! But if I was going to be in a TV show I would want to be the 7th friend in Friends.

What's the best this you can cook? Nachos

Have you any brothers or sisters? I don't have any full brothers or sisters but I have 2 step sisters and 1 step brother.

Eagles or Dockers? Neither... Magpies and whoever is playing the Eagles!

What law or rule do you think is the most important one for being Respectful?

Respect your teachers ha-ha! No, I think using manners, such as please and thank you, go a long way in gaining the respect of other people.

When have you had to be the most resilient? I had to be very resilient during the 2018 Grand final when Collingwood lost to the Eagles. I was in a room full of West Coast supporters and it was very difficult to remain resilient. It still hurts to write about this but it's getting a little easier!

What is your greatest achievement? Moving away from Busselton to take my first teaching job in Cue. It was very daunting leaving my family and friends and the comfort of my home town but I am so glad that I did.

Name one person you really respect. I really respect my Mum. She has a habit of telling me things that I don't want to hear but she does it because she cares about me more than anyone else in the world. I hope that I have such a good relationship with my own kids one day.

Tell us a joke. Why are fish so smart? Because they live in schools...



CUEROSITY OP SHOP

Has anyone out there got any shelving or book shelves they would be willing to donate to the op shop please? The floor is overflowing with goodies but we need more shelving on which to display them. All donations will be greatly appreciated and you will be helping your local community out.

Please contact Jenni on 0438 280 947
or Sandra on 040 9889 068.





VOLUNTEER AMBULANCE OFFICERS **URGENTLY REQUIRED TO HELP MAINTAIN THIS** **ESSENTIAL SERVICE FOR YOUR COMMUNITY**

The Cue Sub Centre would sincerely like to thank Rob Madson, Jenni and Ian Dennis and Janet Wicks for the service and hours they have given to the town. We wish them all the best.

We are in urgent need of volunteers to help keep our service going. We currently have a small team of dedicated volunteers who commit many hours to their community. Most of our volunteers have jobs and families in our community and some are not available to help at the moment. Many are becoming tired and we are having difficulty finding people when we need them. We really do need more volunteers to help share the load. Without volunteers there is no ambulance in our town.

We are urgently seeking community members to join the Cue Sub Centre. We understand you all have busy lives so there are no set rosters. All we ask is if you have spare time when a call comes in, your assistance would be greatly appreciated, AND, if you live out of town – that's no problem!

We also have other roles available from general vehicle checks, cleaning & stock checks.

Benefits:

FREE Ambulance Officer Training - conducted locally.

FREE Uniform

FREE Provide First Aid course.

FREE ambulance cover.

Corporate Benefits and Discounts.

24/7 Clinical Support

Assist with delivering an essential service to your community

Learn life skills that will benefit you in both your volunteering role and your day to day life

INTERESTED???

If you'd like to help, visit www.stjohnnchangelives.com.au or give our Community Paramedic: Michelle Fyfe a call on 0437 681 562, or email Michelle.M.Fyfe@stjohnwa.com.au



Get behind the wheel

Emergencies don't have working hours, that's why we need more volunteer Drivers. If you're looking for a way to help, and love getting behind the wheel, this is the role for you.

You'll help with patient transfers, inter-hospital moves and RFDS transfers. And while this is mainly a driver-only role, you will still receive the training you need to assist an Ambulance Officer in an emergency.

We always need help, so to see how people exactly like you can contribute head to stjohnchangelives.com.au or give our Community Paramedic Michelle Fyfe a call on 0437 681 562, or email Michelle.M.Fyfe@stjohnwa.com.au

Help keep your ambulance service strong in Cue.

Life goes on.
Volunteer with St John.



**COUNTRY TO CANBERRA'S LEADERSHIP COMPETITION
OPEN NOW!**

**RESPOND TO THE 2021 QUESTION:
COURAGE TO
CHALLENGE:**

What is the role
of rural women in
driving change in
their communities?

**WINNERS
RECEIVE AN ALL
EXPENSES PAID TRIP
TO CANBERRA - MEET
TOP POLITICIANS
AND CEOS, AND GET
AMAZING LEADERSHIP
TRAINING!**

**OPEN TO RURAL
GIRLS AND NON-
BINARY STUDENTS IN
GRADES 10-12!!**



**FOR MORE INFORMATION, VISIT
COUNTRYTOCANBERRA.COM.AU**



Regional
Alliance
West

NYARLU MIYARNUMALGU INDIGENOUS WOMEN'S

Free Legal Information Session on:
Criminal Injuries Compensation Claims.

When: Friday 30th July 2021

**Where: Cue Community Resource Centre,
Cue**

Time: 9:00am

If you would like information or advice, why not come down and have a chat with Gillian.

Everyone is WELCOME to attend – FREE Resources to take away.

Cue

ACTION GROUP

**8th
JULY**

MEETING @ Cue CRC at 5.00pm

The Cue Action Group has just started and we are meeting monthly to discuss possible and future events and actionable projects in Cue for the good of the community.

Join our Facebook group to find out more:

<https://www.facebook.com/groups/291559685778923>



SHIRE OF CUE PUBLIC LIBRARY

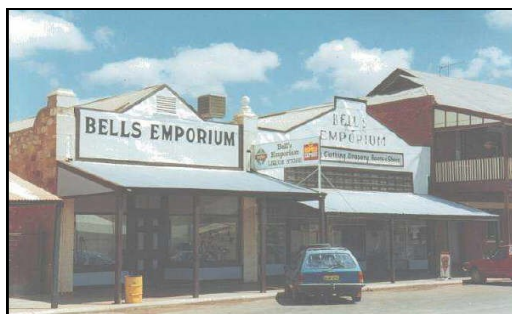
Monday to Friday
8.30am—4.30pm

Cue Community & Visitor Centre

Check our Facebook page for stock updates

<https://www.facebook.com/ShireofCue>

BELL & CO (EMPORIUM) LIQUOR—GROCERIES



49 Austin St, Cue W.A. 6640

OWNER/MANAGERS
Ross & Pix Pigdon

*Please let us know if you are not happy
with our service*

Shop Hours

Monday—Friday: 9 am — 1.00 pm
Monday—Friday: 3.30pm — 6.00 pm
Saturday: 9 am — 12.00pm
Sunday: Closed
Public Holidays: to be advised

Agents For:

All Evaporative Air Conditioning Parts
Coerco Water Tanks & Agriculture Products
Mt Magnet Meats
Toll Ipec
Firearms Dealer

Phone: 08 99631012
Fax: 08 99631370
Pix Mobile: 0428508090
Mobile: 0427864165 (Toll Ipec)
email: bellcoptyltd@bigpond.com.au



Integrated Chronic Disease Care Program

**Do you have a team that can
assist with your **diabetes**,
cardiovascular disease or
respiratory disease?**



Podiatry | Dietetics | Physiotherapy | Diabetes Education

Our Team can assist with these services and provide
care co-ordination to assist with all your health
appointments or enquiries.

If you suffer from Diabetes, Cardiovascular Disease or Respiratory
Disease and would like to make changes to improve your health,
call our Care Coordinators Beryl or Danielle on **0447 268 603**



Yoga

TUESDAY 6:00PM

CUE TOWN HALL

ALL WELCOME



Strengthen



Relax



Connect

**Classes are free with mats
provided & done by instructional
video. All are welcome but at your
own discretion, so remember to
listen to your body & do what feels
good for you!**

For more info call 0459 032 881

MOUNT MAGNET MEATS



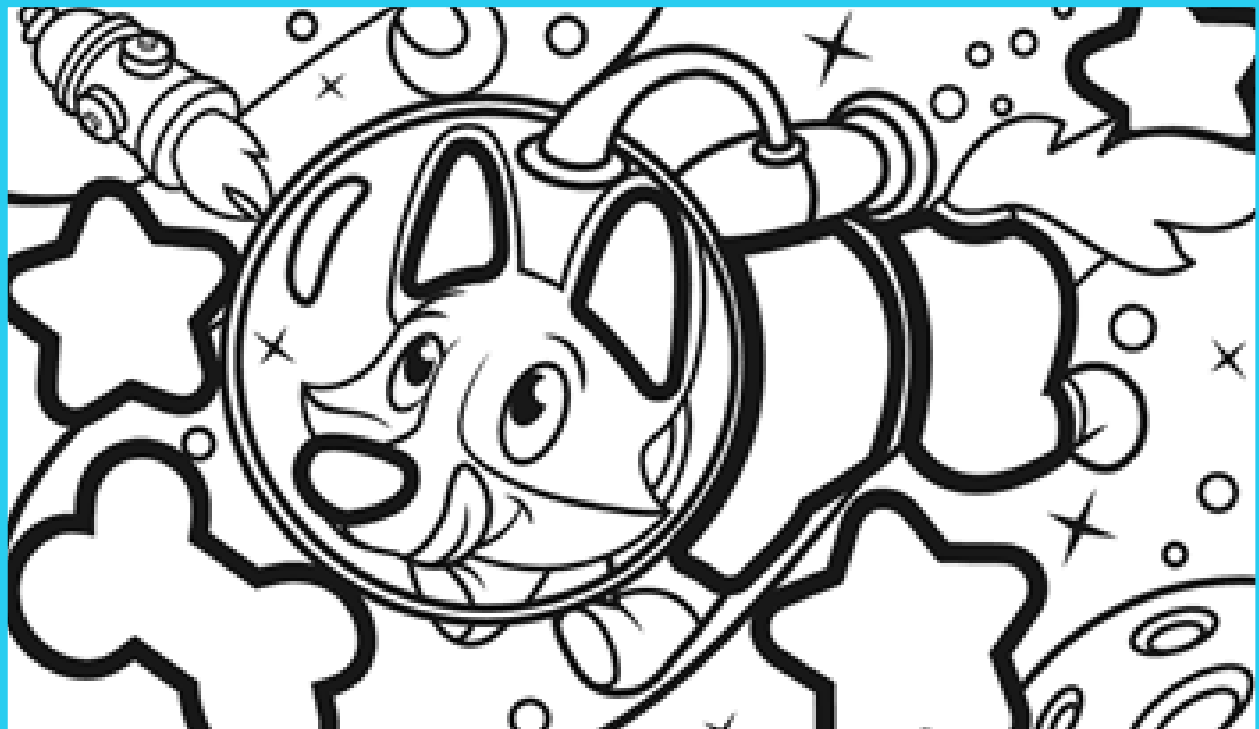
The only FRESH PRODUCE BUTCHER in the Mid West

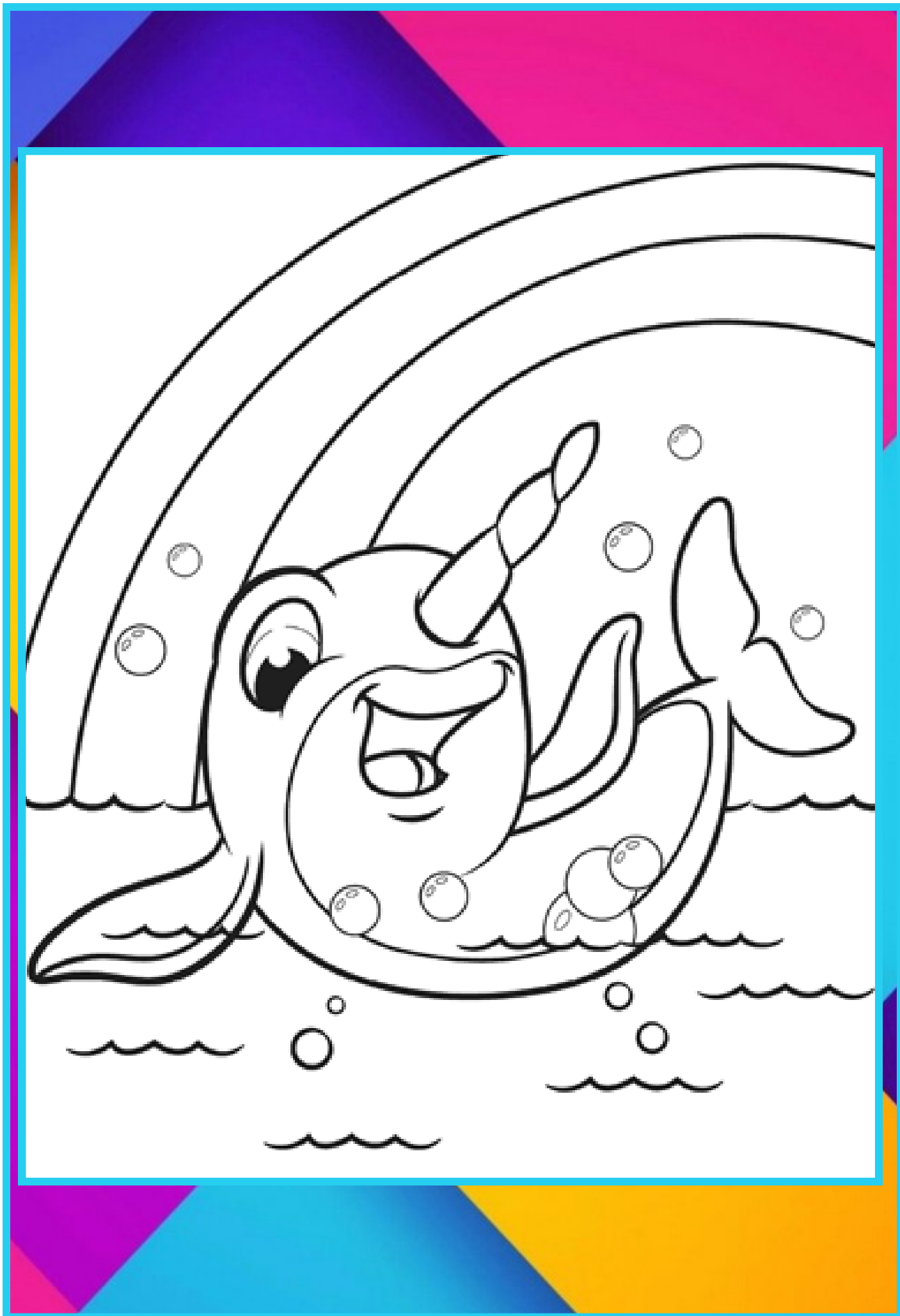
Open
Monday - Friday
9am - 5pm
&
Saturday
9am - 12pm

76 Hepburn St (Main Street) Phone / Fax 9963 4195

*Pleased to meet you
with meat to please you*

COLOURING PAGE





JULY LOGIC PUZZLE

ANSWERS IN AUGUST EDITION

		sirens					year					prices				
		armor-stop	eco alert	rip tide	securalert	viking 5	1994	1996	1997	1998	2000	\$120	\$124	\$140	\$160	\$188
decibels	100															
	105															
	110															
	115															
	120															
prices	\$120															
	\$124															
	\$140															
	\$160															
	\$188															
years	1994															
	1996															
	1997															
	1998															
	2000															

CLUES

- The \$120 siren is 10 decibels louder than the Armor-Stop.
- The siren released in 1996 is 5 decibels louder than the \$120 siren.
- Of the siren released in 2000 and the Armor-Stop, one is 100 decibels and the other \$188.
- The viking 5 isn't 115 decibels.
- The eco alert isn't 115 decibels.
- The 115 decibel siren is \$124.
- Neither the siren released in 1998 or 1994 are 100 decibels.
- The 105 decibel siren was released in 1994.
- The \$160 siren is 15 decibels quieter than Rip Tide.
- The Eco Alert isn't 105 decibels.
- The siren with a loudness of 105 decibels doesn't cost \$140.

JULY WORD SEARCH

ANSWERS IN AUGUST EDITION

F	I	Z	Z	E	S	S	G	Y	O	V	N	E	H
O	G	N	I	R	W	A	L	K	S	Y	S	S	P
R	D	O	P	I	E	R	R	R	E	W	O	T	M
T	V	O	G	J	E	U	E	M	I	N	K	S	Y
U	U	G	E	T	S	T	A	G	N	A	T	E	L
N	L	C	S	T	U	A	S	T	H	M	A	Z	P
E	T	A	I	R	P	O	R	P	P	A	S	I	M
D	E	C	N	A	L	G	N	I	M	M	A	D	I
A	M	U	A	R	T	R	I	B	U	N	A	L	S
L	A	M	E	S	T	L	S	T	I	D	U	A	Y
G	N	I	K	R	A	H	Y	B	R	I	D	A	P
S	G	N	A	T	A	F	O	S	T	I	R	E	M
N	Y	C	H	C	M	R	E	U	X	N	P	I	U
Q	E	E	K	E	D	A	U	S	S	I	D	S	D

Asthma
Audits
Damming
Dissuade
Dopier
Dumpy
Easterly
Eject
Envoy
Fizzes
Fortune
Glade

Glanced
Harking
Hybrid
Lathe
Lymph
Mangy
Merits
Mince
Minks
Misappropriate
Reign
Return

Robin
Rustic
Safes
Shack
Simply
Stagnate
Swigs
Thous
Tower
Trace
Trauma
Tribunals

Trips
Walks
Wiggle
Wring
Yarns
Zests



Department of
Transport

Please follow any COVID—19 safety rules the Cue CRC has in place. The rules are in place to keep everyone safe.

DoT Remote Services will be visiting **CUE**



When: Monday 12th July, 1pm - 3pm

Where: Cue Community Resource Centre

We will be able to help you with the following services:

- theory test
- photo card applications
- driver's licence applications
- change of address
- registration and driver's licence renewals
- vehicle transfers
- return of vehicle plates
- driving assessments

To enable us to help you, please ensure you bring your birth certificate, Medicare card, bank card and two types of proof of residency, along with cash or card for payment.

For enquiries please call: Karen 92168194

Sometimes quicker is better with **DoT Direct**

Whether you're renewing your licence, transferring vehicle ownership or checking your demerit points, **DoT Direct** is quick and easy to use wherever you are.

Start saving time by visiting www.transport.wa.gov.au/dotdirect



Keep up to date with upcoming remote services visits and stories, follow us on Facebook **Department of Transport Regional Services WA** or search **@RegionalServicesWA**

NURSING POST

RFDS DATES:

Tuesday 6th

Tuesday 20th

Please contact the Cue Nursing Post
for GRAMS dates and to make an
appointment.

(08) 9963 0100



EMERGENCY SERVICES

Fire & Rescue, Ambulance & Police

In case of emergency please call

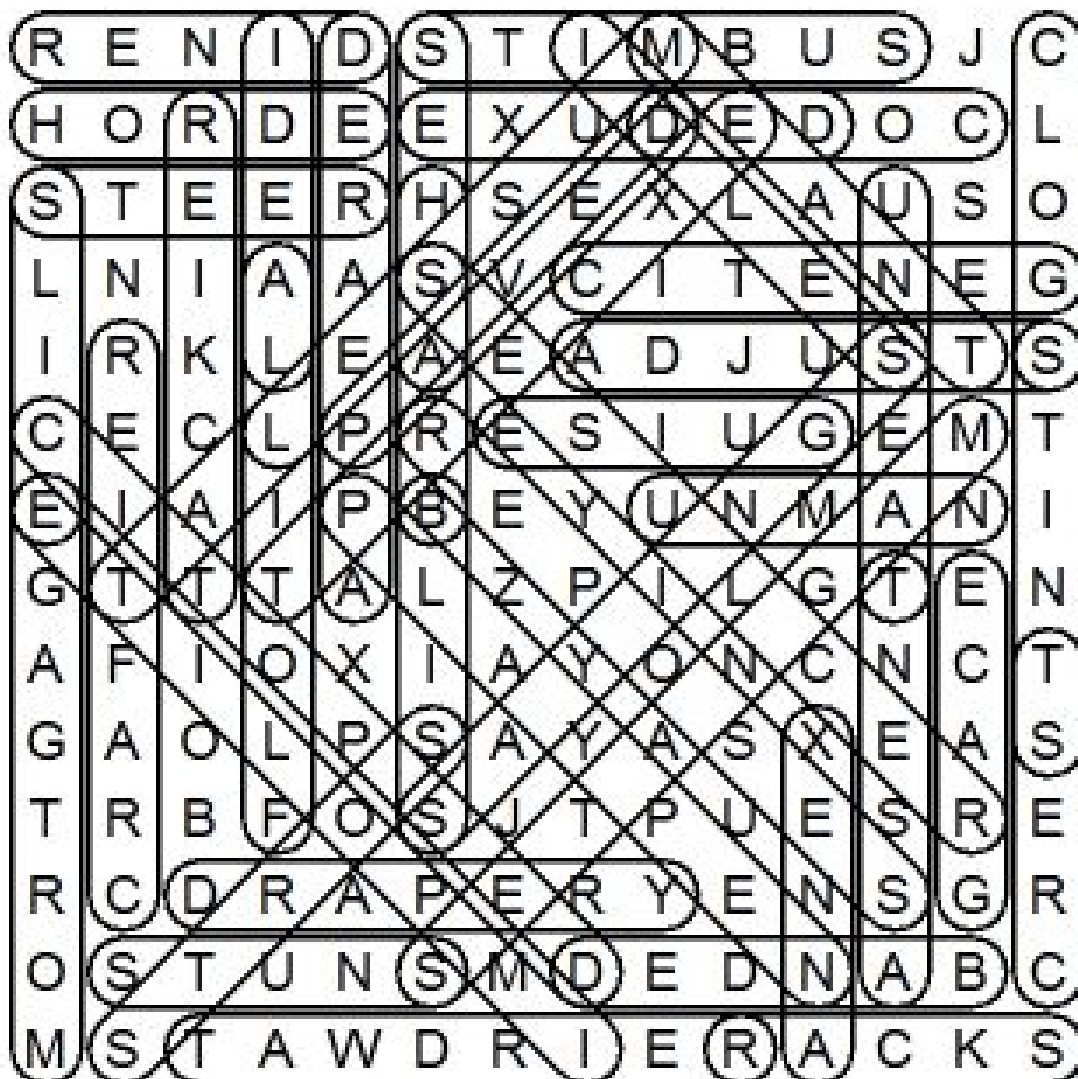
000

JUNE PUZZLE ANSWERS

June Logic

rewards	names	universities	flowers
\$610	joseph	yale	roses
\$1,400	gabrielle	MIT	sunflowers
\$1,510	eliza	cal tech	tulips
\$1,630	isaiah	harvard	pansies
\$1,640	nathaniel	duke	poppies

June Word Search



July

SUNDAY	MONDAY	TUESDAY	WEDNESDAY	THURSDAY	FRIDAY	SATURDAY
				1	2	3
4	5 Walking Group	6 RFDS Community Morning Tea Yoga	7 Craft Group	8 Cue Action Group	9	10
11	12 Walking Group DOT	13 Community Morning Tea Yoga	14 Craft Group	15	16	17
18	19 Walking Group	20 RFDS Community Morning Tea Yoga Council Meeting	21 Craft Group	22	23	24
25 Market Day	26 Walking Group	27 Community Morning Tea Yoga	28 Craft Group	29	30	31



COMMUNITY SURVEY

The Shire of Cue is updating its Community Strategic Plan and invites input from people who live, work and play in the Shire of Cue to express their views. The information provided by the survey will assist Council to identify areas of highest priority, explore new areas of interest and also help maintain the highest level of performance for Cue.

You can find the survey:

- ♦ on the last pages of the Dryblower
- ♦ survey monkey, follow this address:
<https://www.surveymonkey.com/r/DHHQCM3>
- ♦ or follow the link on the Shire of Cue website

All paper surveys can be dropped off at the Shire office or the Cue Community Resource Centre.

We urge you to fill in the survey. The more people that fill in the survey the greater the overview of the Shire.

Section 1 - Importance of Services

1. How would you rate the importance of the following Council services provided within the Shire?

	Not Important	Somewhat Important	Neutral	Very Important	Extremely Important
Major roads	<input type="radio"/>	<input type="radio"/>	<input type="radio"/>	<input type="radio"/>	<input type="radio"/>
Local streets	<input type="radio"/>	<input type="radio"/>	<input type="radio"/>	<input type="radio"/>	<input type="radio"/>
Rural roads	<input type="radio"/>	<input type="radio"/>	<input type="radio"/>	<input type="radio"/>	<input type="radio"/>
Footpaths/cycleways	<input type="radio"/>	<input type="radio"/>	<input type="radio"/>	<input type="radio"/>	<input type="radio"/>
Airport	<input type="radio"/>	<input type="radio"/>	<input type="radio"/>	<input type="radio"/>	<input type="radio"/>
Household bin collection	<input type="radio"/>	<input type="radio"/>	<input type="radio"/>	<input type="radio"/>	<input type="radio"/>
Landfill site/tip	<input type="radio"/>	<input type="radio"/>	<input type="radio"/>	<input type="radio"/>	<input type="radio"/>
Litter collection	<input type="radio"/>	<input type="radio"/>	<input type="radio"/>	<input type="radio"/>	<input type="radio"/>
Street appearance - Trees and verge maintenance	<input type="radio"/>	<input type="radio"/>	<input type="radio"/>	<input type="radio"/>	<input type="radio"/>
Parks and gardens	<input type="radio"/>	<input type="radio"/>	<input type="radio"/>	<input type="radio"/>	<input type="radio"/>
Playgrounds	<input type="radio"/>	<input type="radio"/>	<input type="radio"/>	<input type="radio"/>	<input type="radio"/>
Cemetery	<input type="radio"/>	<input type="radio"/>	<input type="radio"/>	<input type="radio"/>	<input type="radio"/>
Public lighting	<input type="radio"/>	<input type="radio"/>	<input type="radio"/>	<input type="radio"/>	<input type="radio"/>
Recreation facilities	<input type="radio"/>	<input type="radio"/>	<input type="radio"/>	<input type="radio"/>	<input type="radio"/>
Sports oval and facilities	<input type="radio"/>	<input type="radio"/>	<input type="radio"/>	<input type="radio"/>	<input type="radio"/>
Town hall	<input type="radio"/>	<input type="radio"/>	<input type="radio"/>	<input type="radio"/>	<input type="radio"/>
Library	<input type="radio"/>	<input type="radio"/>	<input type="radio"/>	<input type="radio"/>	<input type="radio"/>
Tourism & Visitor Services	<input type="radio"/>	<input type="radio"/>	<input type="radio"/>	<input type="radio"/>	<input type="radio"/>

	Not Important	Somewhat Important	Neutral	Very Important	Extremely Important
Dog/Cat control	<input type="radio"/>	<input type="radio"/>	<input type="radio"/>	<input type="radio"/>	<input type="radio"/>
Drainage	<input type="radio"/>	<input type="radio"/>	<input type="radio"/>	<input type="radio"/>	<input type="radio"/>
Pest Control	<input type="radio"/>	<input type="radio"/>	<input type="radio"/>	<input type="radio"/>	<input type="radio"/>
Youth Services	<input type="radio"/>	<input type="radio"/>	<input type="radio"/>	<input type="radio"/>	<input type="radio"/>

Are there any other services that you would rate as important?

Section 2 - Quality of Services

2. How would you rate your satisfaction with the current level of services being provided by the Shire of Cue?

	Not Satisfied	Somewhat Satisfied	Neutral	Satisfied	Completely satisfied
Major roads	<input type="radio"/>	<input type="radio"/>	<input type="radio"/>	<input type="radio"/>	<input type="radio"/>
Local streets	<input type="radio"/>	<input type="radio"/>	<input type="radio"/>	<input type="radio"/>	<input type="radio"/>
Rural roads	<input type="radio"/>	<input type="radio"/>	<input type="radio"/>	<input type="radio"/>	<input type="radio"/>
Footpaths/cycleways	<input type="radio"/>	<input type="radio"/>	<input type="radio"/>	<input type="radio"/>	<input type="radio"/>
Airport	<input type="radio"/>	<input type="radio"/>	<input type="radio"/>	<input type="radio"/>	<input type="radio"/>
Household bin collection	<input type="radio"/>	<input type="radio"/>	<input type="radio"/>	<input type="radio"/>	<input type="radio"/>
Landfill site/tip	<input type="radio"/>	<input type="radio"/>	<input type="radio"/>	<input type="radio"/>	<input type="radio"/>
Litter collection	<input type="radio"/>	<input type="radio"/>	<input type="radio"/>	<input type="radio"/>	<input type="radio"/>
Street appearance - Trees and verge maintenance	<input type="radio"/>	<input type="radio"/>	<input type="radio"/>	<input type="radio"/>	<input type="radio"/>
Parks and gardens	<input type="radio"/>	<input type="radio"/>	<input type="radio"/>	<input type="radio"/>	<input type="radio"/>

	Not Satisfied	Somewhat Satisfied	Neutral	Satisfied	Completely satisfied
Playgrounds	<input type="radio"/>	<input type="radio"/>	<input type="radio"/>	<input type="radio"/>	<input type="radio"/>
Cemetery	<input type="radio"/>	<input type="radio"/>	<input type="radio"/>	<input type="radio"/>	<input type="radio"/>
Public lighting	<input type="radio"/>	<input type="radio"/>	<input type="radio"/>	<input type="radio"/>	<input type="radio"/>
Recreation facilities	<input type="radio"/>	<input type="radio"/>	<input type="radio"/>	<input type="radio"/>	<input type="radio"/>
Sports oval and facilities	<input type="radio"/>	<input type="radio"/>	<input type="radio"/>	<input type="radio"/>	<input type="radio"/>
Town hall	<input type="radio"/>	<input type="radio"/>	<input type="radio"/>	<input type="radio"/>	<input type="radio"/>
Library	<input type="radio"/>	<input type="radio"/>	<input type="radio"/>	<input type="radio"/>	<input type="radio"/>
Tourism & Visitor Services	<input type="radio"/>	<input type="radio"/>	<input type="radio"/>	<input type="radio"/>	<input type="radio"/>
Dog/Cat control	<input type="radio"/>	<input type="radio"/>	<input type="radio"/>	<input type="radio"/>	<input type="radio"/>
Drainage	<input type="radio"/>	<input type="radio"/>	<input type="radio"/>	<input type="radio"/>	<input type="radio"/>
Pest Control	<input type="radio"/>	<input type="radio"/>	<input type="radio"/>	<input type="radio"/>	<input type="radio"/>
Youth Services	<input type="radio"/>	<input type="radio"/>	<input type="radio"/>	<input type="radio"/>	<input type="radio"/>

Please provide comments on ways you think these services can be improved.

3. Are there any other services that you think the Shire should be providing?

4. In relation to the Strategic Community Plan (located on the Shire's website), how do you rate the progress made by Council to implement it?

- ☐ Not Satisfied
- ☐ Somewhat Satisfied
- ☐ Neutral
- ☐ Satisfied
- ☐ Completely satisfied

Please provide comments

5. Do you think the current Strategic Community Plan meets the goals and objectives of the Cue Community?

- ☐ Yes
- ☐ No

Please provide comments.

6. How do you rate the projects being implemented by the Shire, e.g. greening the town, sport facility upgrades, heritage renovations etc.?

- ☐ Poor
- ☐ Average
- ☐ Good
- ☐ Excellent

Please provide comments.

7. In addition to the services and facilities it provides, the Shire of Cue also works for the community in other ways.

For each of the services listed below, please indicate your level of satisfaction with the services provided.

	Not satisfied	Somewhat satisfied	Neutral	Satisfied	Completely satisfied
Ranger services	<input type="radio"/>	<input type="radio"/>	<input type="radio"/>	<input type="radio"/>	<input type="radio"/>
Building approvals	<input type="radio"/>	<input type="radio"/>	<input type="radio"/>	<input type="radio"/>	<input type="radio"/>
Town planning approvals	<input type="radio"/>	<input type="radio"/>	<input type="radio"/>	<input type="radio"/>	<input type="radio"/>
Environmental health (ie food safety, disease prevention, mosquito control, etc)	<input type="radio"/>	<input type="radio"/>	<input type="radio"/>	<input type="radio"/>	<input type="radio"/>
Finance/rates	<input type="radio"/>	<input type="radio"/>	<input type="radio"/>	<input type="radio"/>	<input type="radio"/>
Community events	<input type="radio"/>	<input type="radio"/>	<input type="radio"/>	<input type="radio"/>	<input type="radio"/>
Youth Support	<input type="radio"/>	<input type="radio"/>	<input type="radio"/>	<input type="radio"/>	<input type="radio"/>

Please provide comment/s on ways you think these services can be improved.

8. Rate your level of satisfaction with the following services that are provided within the Shire of Cue by other agencies.

	Not satisfied	Somewhat satisfied	Neutral	Satisfied	Completely satisfied
Schools/Education	<input type="radio"/>	<input type="radio"/>	<input type="radio"/>	<input type="radio"/>	<input type="radio"/>
Health services	<input type="radio"/>	<input type="radio"/>	<input type="radio"/>	<input type="radio"/>	<input type="radio"/>
Policing/community safety	<input type="radio"/>	<input type="radio"/>	<input type="radio"/>	<input type="radio"/>	<input type="radio"/>
Individual and family support services	<input type="radio"/>	<input type="radio"/>	<input type="radio"/>	<input type="radio"/>	<input type="radio"/>
Environment protection/conservation	<input type="radio"/>	<input type="radio"/>	<input type="radio"/>	<input type="radio"/>	<input type="radio"/>
Economic development/planning for growth	<input type="radio"/>	<input type="radio"/>	<input type="radio"/>	<input type="radio"/>	<input type="radio"/>
Business services	<input type="radio"/>	<input type="radio"/>	<input type="radio"/>	<input type="radio"/>	<input type="radio"/>

Please provide comment/s on ways you think these services can be improved

Section 3 - General Information

9. Rate the Shire's performance over the past twelve months in the following areas

	Poor	Average	Good	Excellent
Responsiveness to community needs	<input type="radio"/>	<input type="radio"/>	<input type="radio"/>	<input type="radio"/>
Willingness to involve the community in making decisions	<input type="radio"/>	<input type="radio"/>	<input type="radio"/>	<input type="radio"/>
Openness and honesty	<input type="radio"/>	<input type="radio"/>	<input type="radio"/>	<input type="radio"/>
Communication	<input type="radio"/>	<input type="radio"/>	<input type="radio"/>	<input type="radio"/>

Section 4 - Living in the Shire of Cue

10. How long have you been living in the Shire of Cue

11. Compared to this time last year, how would you rate your quality of life in the Shire of Cue?

Worse	About the same	Better
<input type="range"/>		

12. In general, how do you rate the Shire of Cue as a place to live?

- ☐ Poor
- ☐ Not good
- ☐ Neutral
- ☐ Good
- ☐ Excellent

13. Do you think you will be living in the Shire of Cue 3 years from now?

- ☐ Yes
- ☐ No
- ☐ Unsure

14. Overall, how would you rate the performance of the Shire of Cue over the past 12 months?

Poor	Average	Excellent
<input type="range"/>		

15. What is the most important thing you think the Shire of Cue should be doing in the next 12 months to improve the community?

Section 5 - About you

16. How do you describe your gender

- ☐ Male
- ☐ Female
- ☐ Prefer not to say
- ☐ Prefer to self describe as

17. Into which of the following age groups do you fall?

- ☐ 18-24
- ☐ 25-34
- ☐ 35-44
- ☐ 45-54
- ☐ 55-64
- ☐ 65+

18. In which part of the Shire do you live?

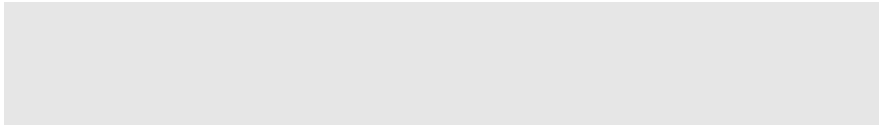
- ☐ Townsite
- ☐ Station
- ☐ Camp

19. What most accurately describes your household status

- ☐ Own
- ☐ Rent
- ☐ Employer provided housing

Section 6 - Comments

20. Please include any comments you may have regarding issues of relevance to the Shire of Cue, including any new services it should consider delivering.





<https://www.facebook.com/CueCRC/>